



[↶ To the Wavelength](#)

[↶ To the Package](#)

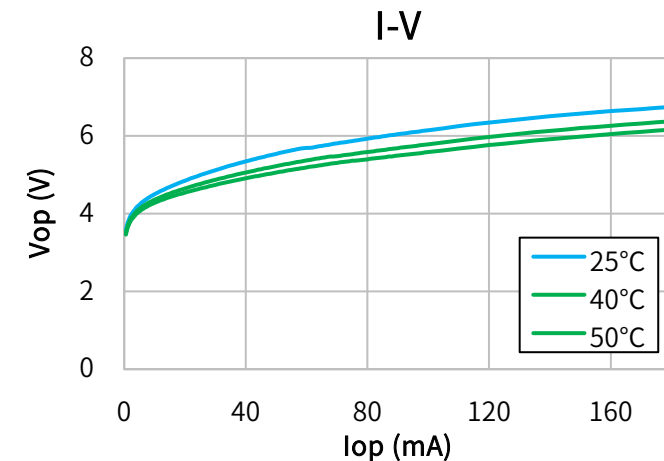
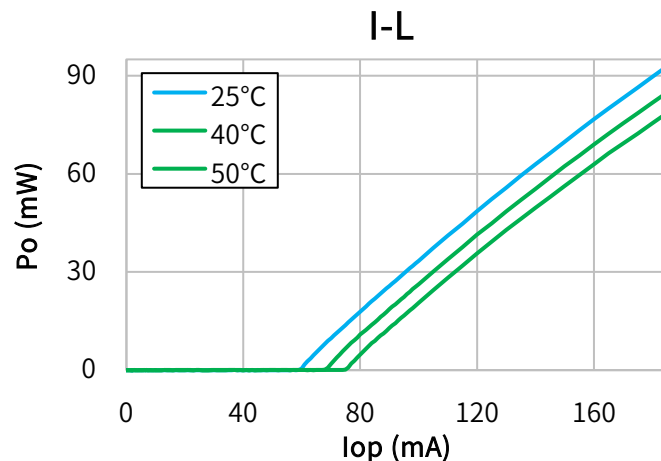
[✉ Contact](#)

## Characteristics

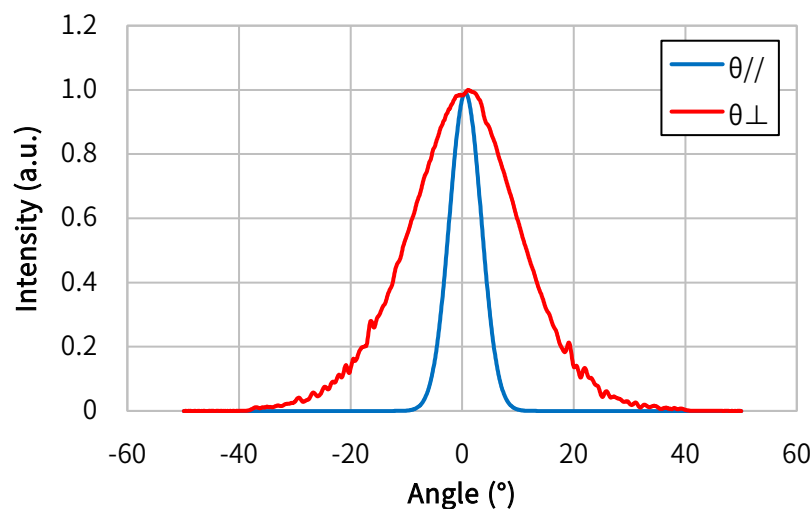
(Tc=25°C, CW)

Item	Conditions	Characteristic value (TYP.)
Wavelength (Peak)	Po=90mW	520nm
Output [Max]	—	90mW[95mW]
Threshold current	—	60mA
Operating current	Po=90mW	185mA
Operating voltage	Po=90mW	6.8V
Far Field (FWHM)	Po=90mW	θ// 7°, θ⊥ 23°
Terminal connections	<a href="#">No.8</a>	<a href="#">φ3.8</a>

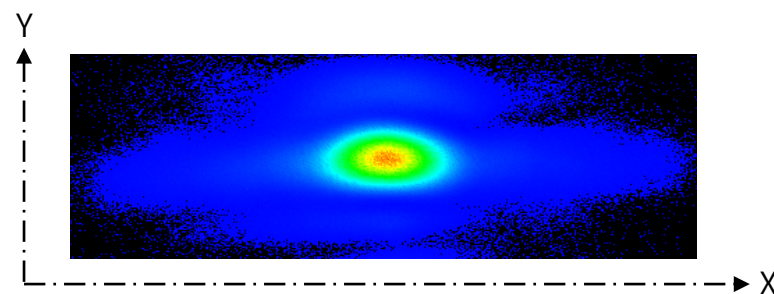
## CW I-L, I-V Temperature



## Far Field Pattern



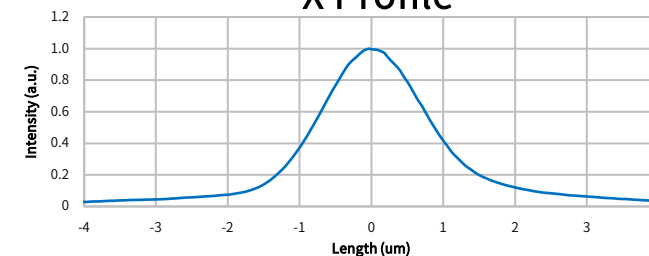
## Near Field Pattern



Emitter size

	FWHM (μm)	1/e (μm)	1/e <sup>2</sup> (μm)
X	1.7	2.1	3.4
Y	0.8	0.9	1.3

## X Profile



## Y Profile

